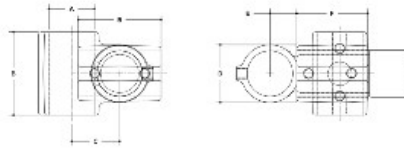


05500 Nu-Rail Adj. Cross Aluminum Magnesium 3/4" IPS (1.09" ID)



NOTE: DIMENSIONS INDICATED BEHIND THE COMMON
SECTION DIMENSIONS FOR EACH FITTING



#30 Nu-Rail Adjustable Cross

PIPE SIZE	LINK-UP FITTING						MULTI-PIPE FITTING						
	A	B	C	D	E	G	F	H	I	J	K	L	
2"	2.40	4.02	2.58	3.17	1.58	2.27	2"	4.11	6.51	3.11	3.70	1.58	2.27
1 1/2"	1.80	3.06	1.94	2.38	1.19	1.70	1 1/2"	3.07	4.89	2.33	2.82	1.19	1.70
1"	1.36	2.25	1.41	1.75	0.86	1.25	1"	2.27	3.51	1.70	2.04	0.86	1.25
3/4"	1.00	1.65	1.04	1.29	0.63	0.91	3/4"	1.65	2.51	1.29	1.54	0.63	0.91
1/2"	0.75	1.24	0.78	0.96	0.47	0.65	1/2"	1.24	1.91	0.96	1.14	0.47	0.65

- Quick and easy way to assemble structural pipe systems • Galvanized malleable iron
- Reduce labor costs by 70% • 100% reusable • No welding or threading • No drilling or bolting

Strong, malleable iron, slip-on pipe fittings with from one to five case-hardened set screws per fitting – depending on the number of pipes to be joined at one joint.

For slip-on aluminum fittings. These fittings can support an axial load of 2000 lbs per set screw with the set screw tightened to a torque of 29 lbs/ft. This is normally obtained when the screw is fully tightened using a ratchet wrench.

30-8 is adjustable between 30° and 45° from the horizontal.