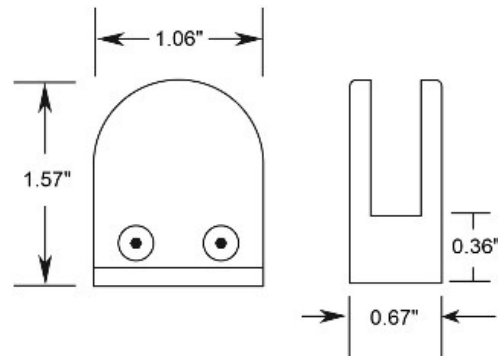


40-816FM Glass Grip - Flat Surface Mount - for 1/4" Glass - Polished 304 Grade Stainless Steel



816FM glass grips are made of 304 grade stainless steel, are available in polished and satin (brushed) finishes, have a flat back for mounting on flat surfaces and come with a rubber insert set designed to hold 1/4" thick panels.

Mounting hole diameter is 0.26". Mount to a flat surface (ex. square post or wall) with a screw that will fit through the hole and is appropriate for the material it is being mounted on.

Material Care: Clean with stainless steel cleaner and protectant, item# CAE-ZCLeankIT.

Case Quantity = 10 pcs

Master Quantity = 40 pcs

Consult local building codes for rail height, wall offset and other requirements.

Call toll free at 877-810-4116 to speak with a product specialist.