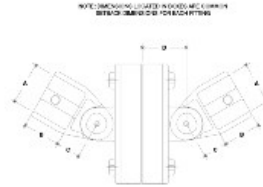


38830 Mend-A-Rail Cross Adj. Aluminum Magnesium 1-1/2" IPS (1.94" ID)



#1900 Mend-A-Rail Adjustable Cross

| PIPE SIZE | E-WALL (IPS) (SCH40) | | | | | | PIPE SIZE | E-WALL (IPS) (SCH40) | | | | | |
|-----------|----------------------|------|------|------|------|------|-----------|----------------------|------|------|------|------|------|
| | A | B | C | D | E | F | | A | B | C | D | E | F |
| 1-1/2" | 1.94 | 1.94 | 1.94 | 1.94 | 1.94 | 1.94 | 1-1/2" | 1.94 | 1.94 | 1.94 | 1.94 | 1.94 | 1.94 |
| 1-1/4" | - | - | - | - | - | - | 1-1/4" | - | - | - | - | - | - |
| 1-3/8" | - | - | - | - | - | - | 1-3/8" | - | - | - | - | - | - |
| 1-1/2" | - | - | - | - | - | - | 1-1/2" | - | - | - | - | - | - |

[Click here for chart](#)

BUYRAILINGS
ARCHITECTURAL AND INDUSTRIAL RAILINGS

2-1/2" IPS
Schedule 40 2.375" O.D., 0.188" Wall
Schedule 40 1.875" I.D., 0.218" Wall

1-1/2" IPS
Schedule 40 1.94" O.D., 0.141" Wall
Schedule 40 1.507" I.D., 0.227" Wall

1-1/4" IPS
Schedule 40 1.66" O.D., 0.141" Wall
Schedule 40 1.227" I.D., 0.181" Wall

1-3/8" IPS
Schedule 40 1.562" O.D., 0.134" Wall
Schedule 40 1.029" I.D., 0.174" Wall

1-1/2" IPS
Schedule 40 1.94" O.D., 0.134" Wall
Schedule 40 1.507" I.D., 0.174" Wall