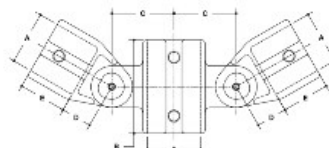


**07330 Adj. Cross Assembly Aluminum Magnesium 1-1/4" IPS (1.72" ID)**



NOTE: DIMENSIONS LOCATED IN BOXES ARE COMMON SETBACK DIMENS IN S FOR EASY FITTING



**#19 Adjustable Cross Assembly**

SCALE: HALF

PIPE SIZE	IMPERIAL UNITS (INCHES)								METRIC UNITS (MM)								
	A	B	C	D	E	F	G	H	I	J	K	L	M	N	O	P	Q
1/2"	2.69	0.88	0.82	1.26	2.12												
3/4"	1.82	0.38	0.25	1.11	1.12												
1"	1.88	0.18	0.04	1.15	1.04												
1 1/4"	1.75	0.88	1.82	0.85	1.14												
1 1/2"	1.21	2.02	1.21	0.87	0.97												

[Click here for chart](#)

**BUYRAILINGS**  
ARCHITECTURAL & INDUSTRIAL RAILINGS

2" IPS  
Schedule 40 2.375" O.D. 0.154" Wall  
Schedule 80 2.375" O.D. 0.218" Wall

1 1/2" IPS  
Schedule 40 1.812" O.D. 0.147" Wall  
Schedule 80 1.812" O.D. 0.203" Wall

1" IPS  
Schedule 40 1.315" O.D. 0.147" Wall  
Schedule 80 1.315" O.D. 0.191" Wall

3/4" IPS  
Schedule 40 0.937" O.D. 0.119" Wall  
Schedule 80 0.937" O.D. 0.154" Wall

1/2" IPS  
Schedule 40 0.625" O.D. 0.119" Wall  
Schedule 80 0.625" O.D. 0.154" Wall