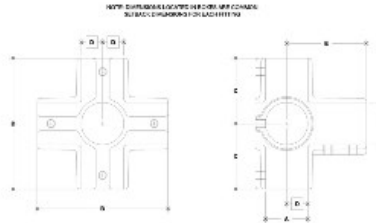
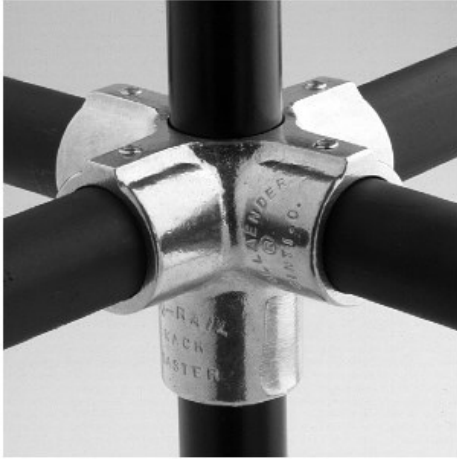


05760 Dbl. Side Outlet Cross Aluminum Magnesium 3/4" IPS (1.09" ID)



| PIPE SIZE | DIMENSIONS (INCHES) | | | | | | PIPE SIZE | DIMENSIONS (INCHES) | | | | | |
|-----------|---------------------|------|------|------|------|------|-----------|---------------------|------|------|------|------|------|
| | A | B | C | D | E | F | | G | H | I | J | K | L |
| 1/2" | 1.5 | 1.5 | 1.5 | 1.5 | 1.5 | 1.5 | 1/2" | 1.5 | 1.5 | 1.5 | 1.5 | 1.5 | 1.5 |
| 3/4" | 1.75 | 1.75 | 1.75 | 1.75 | 1.75 | 1.75 | 3/4" | 1.75 | 1.75 | 1.75 | 1.75 | 1.75 | 1.75 |
| 1" | 2.0 | 2.0 | 2.0 | 2.0 | 2.0 | 2.0 | 1" | 2.0 | 2.0 | 2.0 | 2.0 | 2.0 | 2.0 |
| 1 1/4" | 2.5 | 2.5 | 2.5 | 2.5 | 2.5 | 2.5 | 1 1/4" | 2.5 | 2.5 | 2.5 | 2.5 | 2.5 | 2.5 |
| 1 1/2" | 3.0 | 3.0 | 3.0 | 3.0 | 3.0 | 3.0 | 1 1/2" | 3.0 | 3.0 | 3.0 | 3.0 | 3.0 | 3.0 |

[Click here for chart](#)

BUYRAILINGS
EQUIPMENT AND ACCESSORIES

2 1/2" IPS
2 1/2" Sch. 40 D.D.
Schedule 40 2.375" I.D., 0.188" Wall
Schedule 40 1.875" I.D., 0.218" Wall

1 1/2" IPS
1 1/2" Sch. 40 D.D.
Schedule 40 1.625" I.D., 0.188" Wall
Schedule 40 1.125" I.D., 0.257" Wall

1" IPS
1" Sch. 40 D.D.
Schedule 40 1.312" I.D., 0.188" Wall
Schedule 40 0.812" I.D., 0.174" Wall

3/4" IPS
3/4" Sch. 40 D.D.
Schedule 40 1.062" I.D., 0.188" Wall
Schedule 40 0.562" I.D., 0.174" Wall