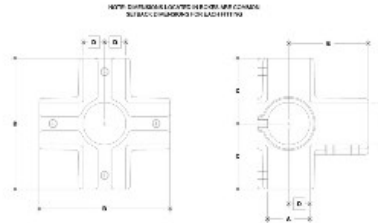
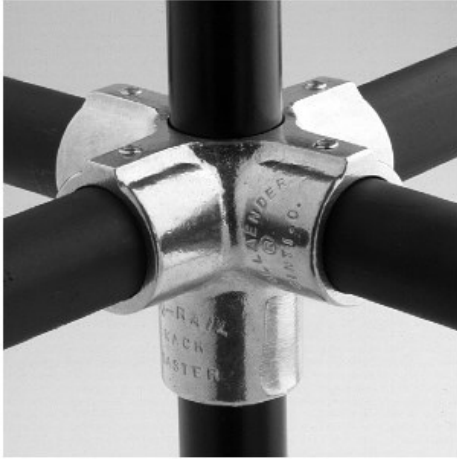


07760 Dbl. Side Outlet Cross Aluminum Magnesium 1-1/4" IPS (1.72" ID)



PIPE SIZE	DIMENSIONS (INCHES)						F	G	H	I	J	K	L	M	N	O	P	Q	R	S	T	U	V	W	X	Y	Z
	A	B	C	D	E	F																					
1/2"	1.125	1.125	1.125	1.125	1.125	1.125	1.125	1.125	1.125	1.125	1.125	1.125	1.125	1.125	1.125	1.125	1.125	1.125	1.125	1.125	1.125	1.125	1.125	1.125	1.125	1.125	1.125
3/4"	1.312	1.312	1.312	1.312	1.312	1.312	1.312	1.312	1.312	1.312	1.312	1.312	1.312	1.312	1.312	1.312	1.312	1.312	1.312	1.312	1.312	1.312	1.312	1.312	1.312	1.312	1.312
1"	1.500	1.500	1.500	1.500	1.500	1.500	1.500	1.500	1.500	1.500	1.500	1.500	1.500	1.500	1.500	1.500	1.500	1.500	1.500	1.500	1.500	1.500	1.500	1.500	1.500	1.500	1.500
1 1/4"	1.875	1.875	1.875	1.875	1.875	1.875	1.875	1.875	1.875	1.875	1.875	1.875	1.875	1.875	1.875	1.875	1.875	1.875	1.875	1.875	1.875	1.875	1.875	1.875	1.875	1.875	1.875
2"	2.375	2.375	2.375	2.375	2.375	2.375	2.375	2.375	2.375	2.375	2.375	2.375	2.375	2.375	2.375	2.375	2.375	2.375	2.375	2.375	2.375	2.375	2.375	2.375	2.375	2.375	2.375

[Click here for chart](#)

BUYRAILINGS
ARCHITECTURAL AND INDUSTRIAL RAILINGS

2 1/2" IPS
Schedule 40 2.375" O.D., 0.188" Wall
Schedule 80 1.875" I.D., 0.218" Wall

2" IPS
Schedule 40 1.937" O.D., 0.188" Wall
Schedule 80 1.437" I.D., 0.207" Wall

1 1/2" IPS
Schedule 40 1.312" O.D., 0.188" Wall
Schedule 80 0.812" I.D., 0.181" Wall

1" IPS
Schedule 40 0.875" O.D., 0.188" Wall
Schedule 80 0.375" I.D., 0.174" Wall

3/4" IPS
Schedule 40 0.625" O.D., 0.188" Wall
Schedule 80 0.125" I.D., 0.154" Wall