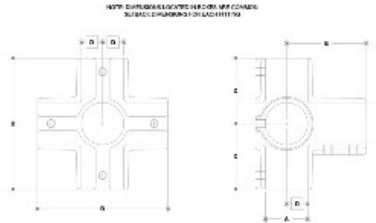
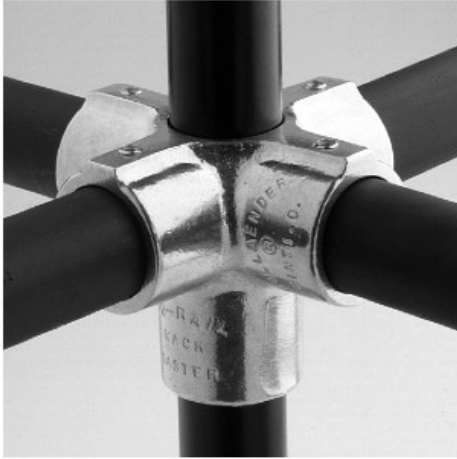


**06760 Dbl. Side Outlet Cross Aluminum Magnesium 1" IPS (1.38" ID)**



**#106 Rackmaster Double Side Outlet Cross**  
D.S.O. 106

PIPE SIZE	DIMENSIONS (INCHES)						F	G	H	I	J	K	L	M	N	O	P	Q	R	S	T	U	V	W	X	Y	Z
	A	B	C	D	E	F																					
1/2"	1.38	1.38	1.38	1.38	1.38	1.38	1.38	1.38	1.38	1.38	1.38	1.38	1.38	1.38	1.38	1.38	1.38	1.38	1.38	1.38	1.38	1.38	1.38	1.38	1.38	1.38	1.38
3/4"	1.38	1.38	1.38	1.38	1.38	1.38	1.38	1.38	1.38	1.38	1.38	1.38	1.38	1.38	1.38	1.38	1.38	1.38	1.38	1.38	1.38	1.38	1.38	1.38	1.38	1.38	1.38
1"	1.38	1.38	1.38	1.38	1.38	1.38	1.38	1.38	1.38	1.38	1.38	1.38	1.38	1.38	1.38	1.38	1.38	1.38	1.38	1.38	1.38	1.38	1.38	1.38	1.38	1.38	1.38
1 1/2"	1.38	1.38	1.38	1.38	1.38	1.38	1.38	1.38	1.38	1.38	1.38	1.38	1.38	1.38	1.38	1.38	1.38	1.38	1.38	1.38	1.38	1.38	1.38	1.38	1.38	1.38	1.38
2"	1.38	1.38	1.38	1.38	1.38	1.38	1.38	1.38	1.38	1.38	1.38	1.38	1.38	1.38	1.38	1.38	1.38	1.38	1.38	1.38	1.38	1.38	1.38	1.38	1.38	1.38	1.38

[Click here for chart](#)

**BUYRAILINGS**  
EQUIPMENT AND ACCESSORIES

2 1/2" IPS  
2 1/2" Sch. 40 D.D.  
Schedule 40 2 1/2" I.D., 0.188" Wall  
Schedule 40 1 3/4" I.D., 0.218" Wall

1 1/2" IPS  
1 1/2" Sch. 40 D.D.  
Schedule 40 1 1/2" I.D., 0.188" Wall  
Schedule 40 1 1/4" I.D., 0.207" Wall

1" IPS  
1" Sch. 40 D.D.  
Schedule 40 1" I.D., 0.188" Wall  
Schedule 40 3/4" I.D., 0.174" Wall

3/4" IPS  
3/4" Sch. 40 D.D.  
Schedule 40 3/4" I.D., 0.188" Wall  
Schedule 40 5/8" I.D., 0.174" Wall