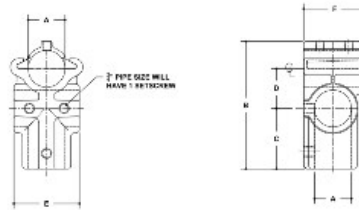


**16200 Modular Side Outlet Cross Aluminum Magnesium 1" IPS (1.38" ID)**



**#104S Modular Rackmaster Side Outlet Cross**

SCALE: 1/2"

PIPE SIZE	DIMENSIONS IN IN (mm)						PIPE SIZE	DIMENSIONS IN MM						
	A	B	C	D	E	F		A	B	C	D	E	F	G
1"	1.38	4.41	2.18	1.43	2.08	2.26	1"	35	112	55	37	53	57	
1 1/2"	1.91	5.49	2.78	1.78	2.91	3.2	1 1/2"	49	140	71	45	74	81	

[Click here for chart](#)

**BUYRAILINGS**  
Architectural and Industrial Railings

2" IPS  
2.315" Outside O.D.  
Schedule 40 2.307" I.D. 0.154" Wall  
Schedule 80 1.929" I.D. 0.218" Wall

1.5" IPS  
1.625" Outside O.D.  
Schedule 40 1.617" I.D. 0.140" Wall  
Schedule 80 1.251" I.D. 0.200" Wall

1.125" IPS  
1.237" Outside O.D.  
Schedule 40 1.229" I.D. 0.140" Wall  
Schedule 80 0.853" I.D. 0.191" Wall

1" IPS  
1.315" Outside O.D.  
Schedule 40 1.307" I.D. 0.154" Wall  
Schedule 80 0.929" I.D. 0.218" Wall

3/4" IPS  
0.875" Outside O.D.  
Schedule 40 0.867" I.D. 0.110" Wall  
Schedule 80 0.514" I.D. 0.154" Wall