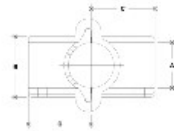


18020 Modular Cross Assembly Aluminum Magnesium 1-1/2" IPS (1.94" ID)



NOTO: DIMENSIONI TOLLERANZE E STIPITE PER CONIUGHE
ATTENZIONE: VERIFICARE PER TUTTI I FITTING



#7S Modular Cross Assembly

P. MODEL	UNITS IN INCHES										METRIC LIMITS IN MM									
	A	B	C	D	E	F	G	H	I	J	K	L	M	N	O	P	Q	R	S	T
18020	1.94	1.94	1.94	1.94	1.94	1.94	1.94	1.94	1.94	1.94	49.29	49.29	49.29	49.29	49.29	49.29	49.29	49.29	49.29	49.29
18020	1.94	1.94	1.94	1.94	1.94	1.94	1.94	1.94	1.94	1.94	49.29	49.29	49.29	49.29	49.29	49.29	49.29	49.29	49.29	49.29
18020	1.94	1.94	1.94	1.94	1.94	1.94	1.94	1.94	1.94	1.94	49.29	49.29	49.29	49.29	49.29	49.29	49.29	49.29	49.29	49.29
18020	1.94	1.94	1.94	1.94	1.94	1.94	1.94	1.94	1.94	1.94	49.29	49.29	49.29	49.29	49.29	49.29	49.29	49.29	49.29	49.29

Click here for chart

BUYRAILINGS
ARCHITECTURAL AND INDUSTRIAL RAILINGS

2 1/2" IPS
2.375" Outer O.D.
Schedule 40 2.361" I.D. 0.144" Wall
Schedule 80 1.957" I.D. 0.218" Wall

2" IPS
1.915" Outer O.D.
Schedule 40 1.891" I.D. 0.142" Wall
Schedule 80 1.507" I.D. 0.257" Wall

1 1/2" IPS
1.315" Outer O.D.
Schedule 40 1.291" I.D. 0.142" Wall
Schedule 80 1.079" I.D. 0.181" Wall

1" IPS
1.315" Outer O.D.
Schedule 40 1.291" I.D. 0.142" Wall
Schedule 80 1.079" I.D. 0.181" Wall

3/4" IPS
0.915" Outer O.D.
Schedule 40 0.891" I.D. 0.142" Wall
Schedule 80 0.719" I.D. 0.181" Wall