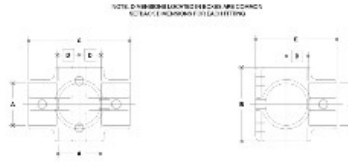


05170 Side Outlet Cross Aluminum Magnesium 3/4" IPS (1.09" ID)



#13 Side Outlet Cross

PIPE SIZE	ANSI/ASME B16.9				MILITARY STANDARD			
	K	D	M	F	K	D	F	C
1 1/2"	111	150	105	20	214			
1 1/2"	110	147	102	18	211			

[Click here for chart](#)

BUYRAILINGS
ARCHITECTURAL AND INDUSTRIAL RAILINGS

2" IPS
Schedule 40 2.375" O.D. 0.188" Wall
Schedule 80 1.937" I.D. 0.218" Wall

1.5" IPS
Schedule 40 1.912" O.D. 0.188" Wall
Schedule 80 1.507" I.D. 0.257" Wall

1.5" IPS
Schedule 40 1.912" O.D. 0.188" Wall
Schedule 80 1.507" I.D. 0.257" Wall

1" IPS
Schedule 40 1.315" O.D. 0.133" Wall
Schedule 80 1.087" I.D. 0.174" Wall

3/4" IPS
Schedule 40 1.315" O.D. 0.133" Wall
Schedule 80 1.087" I.D. 0.174" Wall