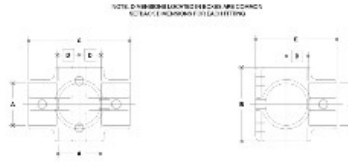


06170 Side Outlet Cross Aluminum Magnesium 1" IPS (1.38" ID)



#13 Side Outlet Cross

ALUMINUM MAGNESIUM							MULTI-PURPOSE							
PIPE SIZE	A	B	C	D	E	F	PIPE SIZE	A	B	C	D	E	F	G
1 1/2"	111	150	105	105	105	114	1 1/2"	41	41	41	41	41	41	41
1 1/4"	102	141	96	96	96	105	1 1/4"	37	37	37	37	37	37	37

[Click here for chart](#)

BUYRAILINGS
ARCHITECTURAL AND INDUSTRIAL RAILINGS

2" IPS
2.375" Outer O.D.
Schedule 40 2.381" I.D., 0.148" Wall
Schedule 80 1.937" I.D., 0.218" Wall

1.5" IPS
1.875" Outer O.D.
Schedule 40 1.881" I.D., 0.148" Wall
Schedule 80 1.537" I.D., 0.257" Wall

1.25" IPS
1.625" Outer O.D.
Schedule 40 1.629" I.D., 0.148" Wall
Schedule 80 1.281" I.D., 0.181" Wall

1" IPS
1.315" Outer O.D.
Schedule 40 1.319" I.D., 0.134" Wall
Schedule 80 0.971" I.D., 0.174" Wall

3/4" IPS
1.063" Outer O.D.
Schedule 40 1.067" I.D., 0.134" Wall
Schedule 80 0.719" I.D., 0.154" Wall