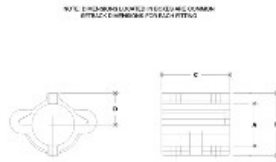
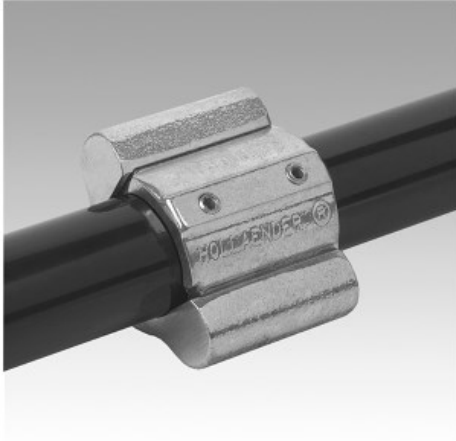


**18170 Modular External Coupling Aluminum Magnesium 1-1/2" IPS (1.94" ID)**



#705 Modular External Coupling  
S22.4-18170

DIMENSIONS IN INCH										DIMENSIONS IN MILLIMETER									
TYPE NO.	A	B	C	D	E	F	G	H	I	TYPE NO.	A	B	C	D	E	F	G	H	I
18170	1.94	1.94	1.94	1.94	1.94	1.94	1.94	1.94	1.94	49.1	49.1	49.1	49.1	49.1	49.1	49.1	49.1	49.1	49.1

This coupling is made to fit over 1-1/2" IPS pipe and it is made of cast Aluminum-Magnesium Alloy 535.

\*Thermal Conductivity (@77F, SI units): 0.24 cal/cm\*s\*K

\*Heat Treatment - Achieves its physical and mechanical properties as-cast (F). This eliminates the time and cost of heat treating.

\*Machinability - Excellent machinability as-cast, excellent surface finish and high dimensional stability.

\*Corrosion Resistance - Highest of any cast alloy. It can be anodized for additional corrosion protection to a 0.7 mil thickness (215R1).

\*Weldability - It can be welded by any of the inert gas processes, T.I.G. or M.I.G., using filler rod of 5356 or 5183.