

**09630 External Coupling Aluminum Magnesium 2" IPS (2.41" ID)**

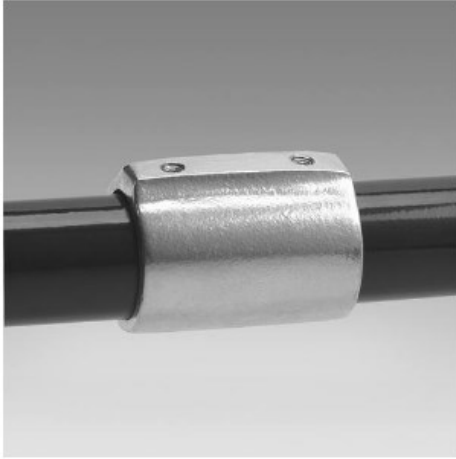


FIG. 1. EXTERNAL COUPLING - ALUMINUM MAGNESIUM



**#70 External Coupling**

STANDARD DIMENSIONS								FINISH LISTINGS							
PIPE SIZE	A	B	C	D	E	F	G	PIPE SIZE	A	B	C	D	E	F	G
2"	1.12	4.05	1.87	2.75				2"	1.12	4.05	1.87	2.75			
2 1/2"	1.31	5.02	2.44	3.54				2 1/2"	1.31	5.02	2.44	3.54			
3"	1.50	5.98	3.02	4.24				3"	1.50	5.98	3.02	4.24			

Click here for chart

**BUYRAILINGS**  
ARCHITECTURAL AND INDUSTRIAL RAILINGS

2" IPS  
2.375" Outer O.D.  
Schedule 40 2.375" I.D. 0.148" Wall  
Schedule 80 1.937" I.D. 0.218" Wall

1 1/2" IPS  
1.900" Outer O.D.  
Schedule 40 1.613" I.D. 0.140" Wall  
Schedule 80 1.307" I.D. 0.207" Wall

1" IPS  
1.315" Outer O.D.  
Schedule 40 1.049" I.D. 0.130" Wall  
Schedule 80 0.887" I.D. 0.179" Wall

3/4" IPS  
1.060" Outer O.D.  
Schedule 40 0.887" I.D. 0.117" Wall  
Schedule 80 0.724" I.D. 0.154" Wall

1/2" IPS  
0.875" Outer O.D.  
Schedule 40 0.719" I.D. 0.099" Wall  
Schedule 80 0.583" I.D. 0.125" Wall