

**07630 External Coupling Aluminum Magnesium 1-1/4" IPS (1.72" ID)**

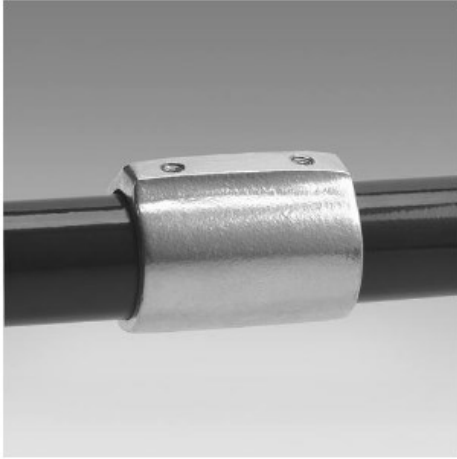


FIG. 1. EXTERNAL COUPLING FOR ALUMINUM MAGNESIUM PIPE



**#70 External Coupling**

ALUMINUM MAGNESIUM										STEEL									
IPS	OD	A	B	C	D	E	F	G	H	IPS	OD	A	B	C	D	E	F	G	H
1 1/4"	1.72	1.00	1.00	1.72	1.72	0.125	0.125	0.125	0.125	1 1/4"	1.75	1.00	1.00	1.75	1.75	0.125	0.125	0.125	0.125
1 1/2"	1.90	1.12	1.12	1.90	1.90	0.125	0.125	0.125	0.125	1 1/2"	1.91	1.12	1.12	1.91	1.91	0.125	0.125	0.125	0.125
2"	2.37	1.37	1.37	2.37	2.37	0.125	0.125	0.125	0.125	2"	2.38	1.37	1.37	2.38	2.38	0.125	0.125	0.125	0.125

Click here for chart

**BUY RAILINGS**  
ARCHITECTURAL AND INDUSTRIAL RAILINGS

2" IPS  
2.375" Outer O.D.  
Schedule 40 2.381" I.D. 0.146" Wall  
Schedule 80 1.937" I.D. 0.218" Wall

1 1/2" IPS  
1.900" Outer O.D.  
Schedule 40 1.907" I.D. 0.146" Wall  
Schedule 80 1.557" I.D. 0.252" Wall

1" IPS  
1.315" Outer O.D.  
Schedule 40 1.321" I.D. 0.146" Wall  
Schedule 80 1.067" I.D. 0.119" Wall

3/4" IPS  
0.875" Outer O.D.  
Schedule 40 0.881" I.D. 0.146" Wall  
Schedule 80 0.747" I.D. 0.119" Wall

1/2" IPS  
0.625" Outer O.D.  
Schedule 40 0.631" I.D. 0.146" Wall  
Schedule 80 0.517" I.D. 0.119" Wall

1/4" IPS  
0.375" Outer O.D.  
Schedule 40 0.381" I.D. 0.146" Wall  
Schedule 80 0.317" I.D. 0.119" Wall