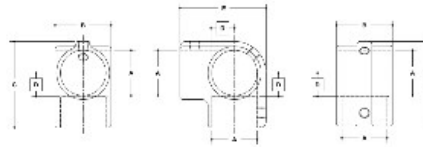


**07150 Side Outlet Tee-E Aluminum Magnesium 1-1/4" IPS (1.72" ID)**



#111 Side Outlet Tee-E



#111 Side Outlet Tee-E

SIZES 1/2" TO 2" IPS							PLATE CONNECTION						
IPS SIZE	A	B	C	D	E	F	IPS SIZE	A	B	C	D	E	F
1/2"	1.50	2.25	2.52	1.57	1.60		1/2"	4.2	5.5	6.0	4.5	4.5	
3/4"	1.87	2.62	2.90	1.94	1.97		3/4"	4.8	6.1	6.6	4.9	4.9	
1"	2.25	3.00	3.28	2.32	2.35		1"	5.4	6.7	7.2	5.5	5.5	
1 1/4"	2.62	3.37	3.65	2.69	2.72		1 1/4"	6.0	7.3	7.8	6.1	6.1	

[Click here for chart](#)

**BUYRAILINGS**  
ARCHITECTURAL AND INDUSTRIAL RAILINGS

2" IPS  
2.375" Outer O.D.  
Schedule 40 2.375" I.D., 0.148" Wall  
Schedule 80 1.937" I.D., 0.218" Wall

1.5" IPS  
1.937" Outer O.D.  
Schedule 40 1.937" I.D., 0.148" Wall  
Schedule 80 1.500" I.D., 0.250" Wall

1.25" IPS  
1.687" Outer O.D.  
Schedule 40 1.687" I.D., 0.147" Wall  
Schedule 80 1.250" I.D., 0.181" Wall

1" IPS  
1.312" Outer O.D.  
Schedule 40 1.312" I.D., 0.133" Wall  
Schedule 80 0.875" I.D., 0.179" Wall

3/4" IPS  
1.312" Outer O.D.  
Schedule 40 1.312" I.D., 0.133" Wall  
Schedule 80 0.875" I.D., 0.154" Wall