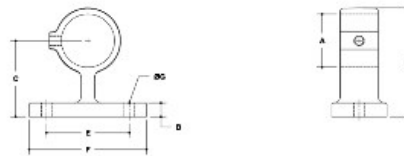


27360 Offset Support Bracket Aluminum Magnesium 1-1/4" IPS (1.72" ID)



NOTE: DIMENSIONS LOCATED IN BOXES ARE COMMON
BEHIND DIMENSIONS FOR EACH FITTING



#55 Offset Support Bracket

SCALE: 1:1/4"

ENGLISH UNITS (inches)							METRIC UNITS (mm)							
PIPE SIZE	A	B	C	D	E	G	PIPE SIZE	A	B	C	D	E	F	G
1/2"	1.55	0.50	2.75	3.00	2.50	0.25	0.44	40	13	70	76	64	6.4	11
3/4"	1.65	0.52	2.90	3.15	2.50	0.25	0.44	43	13	75	80	64	6.4	12
1"	1.80	0.54	3.05	3.30	2.50	0.25	0.44	46	13	80	85	64	6.4	13

- Quick and easy way to assemble structural pipe systems • Galvanized malleable iron
- Reduce labor costs by 70% • 100% reusable • No welding or threading • No drilling or bolting

Strong, malleable iron, slip-on pipe fittings with from one to five case-hardened set screws per fitting – depending on the number of pipes to be joined at one joint.

For slip-on aluminum fittings. These fittings can support an axial load of 2000 lbs per set screw with the set screw tightened to a torque of 29 lbs/ft. This is normally obtained when the screw is fully tightened using a ratchet wrench.