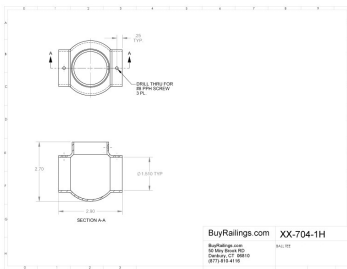


40-704/1H SPEC SHEET

BuyRailings 71 Commerce Drive Brookfield, CT 06804 T 877-810-4116 F +1-203-930-3620 www.buyrailings.com

40-704/1H Polished Stainless Steel Ball Tee 1-1/2" OD



Ball fittings are used to construct handrails, footrails, stair rails, bar rails, ballet rails, and many other metal railing systems. The vertical posts of the railings should be made with a continuous architectural metal tube (for strength) while the horizontals are cut and fit with architectural hardware between posts. Ball fittings may be available in a variety of finishes not usually found in traditional brass fittings, including white, stainless steel, and more.

Note:

All ball fittings are supplied with self-drilling, self-tapping hardware.