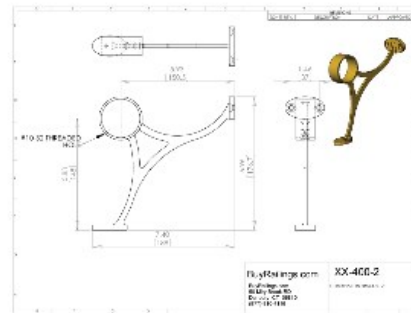


**44-400/2 Satin (Brushed) Stainless Steel Combination Bar Footrail Bracket 2" OD**



This is our most popular bracket for bar foot rail installation. It is available in three different finishes, for either 1-1/2" or 2" outside diameter tubing. One arm of this bracket mounts to the bar, and the second arm of the bracket rests on the floor to provide additional support.

**Note:**

Fittings are supplied with self-drilling, self-tapping hardware.  
Maximum recommended spacing between brackets is 4 feet.