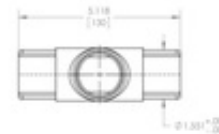
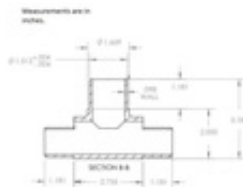


49-734C/424 734C - Flush Tee - Channel Tube to Round Tube (Satin Stainless Steel 316)



This tee can connect to two different tubes.

One neck of the fitting mates with round tube, 1.67" x 0.08" (item A114).

The other two fittings mate with channel tube, 1.67" x 0.06" (item A114U).

A streamlined look is achieved with the use of flush fittings. Different options ensure simple assembly and flexibility to accommodate any project. Our flush fittings feature a 1" long sleeve (The longest in the industry) for added strength and adhesive coverage.

Note:

Flush fittings DO NOT include screws. Attach tube to fitting with Lido Weld adhesive, LB-00201.