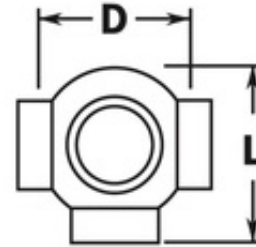


00-707/2 707 - Ball Side Outlet Cross (Polished Brass, 2" OD (0.05" Wall))



Ball fittings are used to construct handrails, footrails, stair rails, bar rails, ballet rails, and many other metal railing systems. The vertical posts of the railings should be made with a continuous architectural metal tube (for strength) while the horizontals are cut and fit with architectural hardware between posts. Ball fittings may be available in a variety of finishes not usually found in traditional brass fittings, including white, stainless steel, and more.

Note:

All ball fittings are supplied with self-drilling, self-tapping hardware.