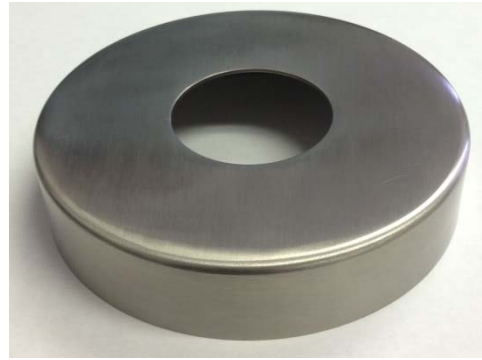


PART# 540/1H

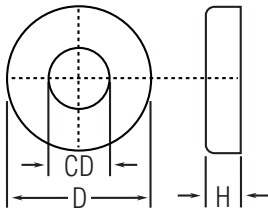
Flange Canopy, 1.5"



(Design for brass canopies)



(Design for stainless steel canopies)



	Brass	Stainless
CD	1.52"	1.52"
D	4"	4.13"
H	.86"	1"

Height of brass canopy (to top of lip) is 1.5"

MATERIAL & AVAILABLE FINISHES

	BRASS	304 SST	316 SST
Polished	√	√	√
Satin	√	√	√

MATERIAL USAGE

	BRASS	304 SST	316 SST
Indoor	√	√	√
Outdoor	√		√

MATERIAL CARE

Brass	Use Lavi Metal Polish (Item# 00202) and apply with a damp, soft cloth.
Stainless Steel	Use metal cleaner and apply with a damp, soft cloth.

INSTALLATION

Place canopy over floor mount flange and secure in place with silicone.

HARDWARE INCLUDED

USE TOGETHER WITH

Flange with Insert (20-541/1H), 1.5" OD tube (A110).