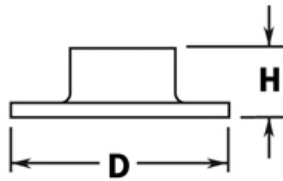


PART# 530/2

4" Wall Flange for 2" Diameter Tubing



| | |
|----------|--------|
| H | 1-1/4" |
| D | 4" |

MATERIAL & AVAILABLE FINISHES

| | BRASS | 304 SST | 316 SST |
|-------------------|-------|---------|---------|
| Polished | √ | √ | √ |
| Satin | √ | √ | √ |
| Clear Coat | √ | | |

MATERIAL USAGE

| | BRASS | 304 SST | 316 SST |
|----------------|-------|---------|---------|
| Indoor | √ | √ | √ |
| Outdoor | √* | | √ |

*Uncoated brass only

MATERIAL CARE

| | |
|------------------------|--|
| Brass | Use Lavi Metal Polish (Item# 00202) and apply with a damp, soft cloth. |
| Stainless Steel | Use metal cleaner and apply with a damp, soft cloth. |

INSTALLATION

Mount plate to the horizontal surface or wall and matching diameter tube inside the neck. Fix the tube to the neck using the supplied PPH screw.

HARDWARE INCLUDED

3 x #12 x 2" Philips flat head screws. 1 x #8 x 5/8" Philips pan head self drilling screw.

USE TOGETHER WITH

2" OD tube (A120, A121), matching flush fittings for 2" tube (730/2 series) and matching finials (600/2, 602/2). Can also use with tube and ball fittings.