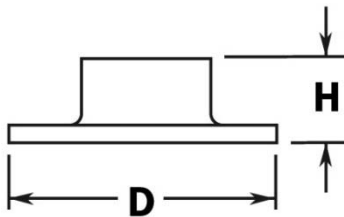
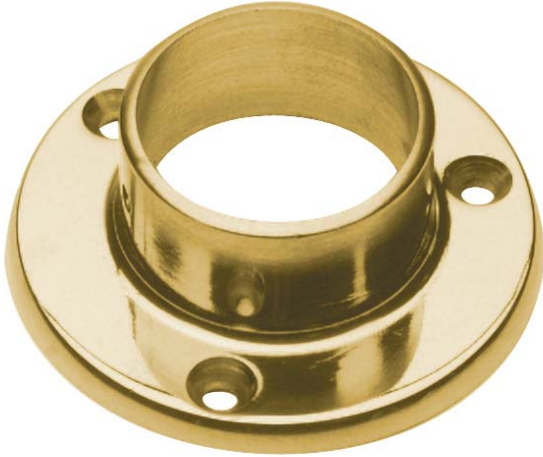


PART# 510/1H

3" Wall Flange for 1-1/2" Diameter Tubing



CP	1-1/16"
D	3"

MATERIAL & AVAILABLE FINISHES

	BRASS	304 SST	316 SST
Polished	√	√	
Satin	√	√	
Clear Coat	√		

MATERIAL USAGE

	BRASS	304 SST	316 SST
Indoor	√	√	
Outdoor	√*		

*Uncoated brass only

MATERIAL CARE

Brass	Use Lavi Metal Polish (Item# 00202) and apply with a damp, soft cloth.
Stainless Steel	Use metal cleaner and apply with a damp, soft cloth.

INSTALLATION

Mount plate to the horizontal surface or wall and matching diameter tube inside the neck. Fix the tube to the neck using the supplied PPH screw.

HARDWARE INCLUDED

3 x #10 x 1-1/2" PFH screws. 1 x #8 x 5/8" PPH self drilling screw.

USE TOGETHER WITH

1.5" OD tube (A110), matching flush fittings for 1.5" tube (730/1H series) and matching finials (600/1H, 602/1H, 608/1H). Can also be used with tube and ball fittings.