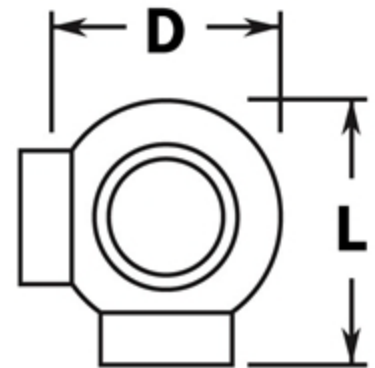


PART# 703/1

Ball Side Outlet Elbow for 1" Tubing



| | |
|----------|---------|
| D | 2" |
| L | 2-3/16" |

| | |
|---------------------------|---|
| MATERIAL | Brass. |
| AVAILABLE FINISHES | Polished, Satin, Clear Coat, Powder Coat. |
| INSTALLATION | Insert tube in openings and fix the fitting to the tube using the self drilling screws. |
| HARDWARE INCLUDED | 3 x #8 x 5/8" Philips pan head self drilling screws. |
| USE TOGETHER WITH | 1" OD tube (A100). |