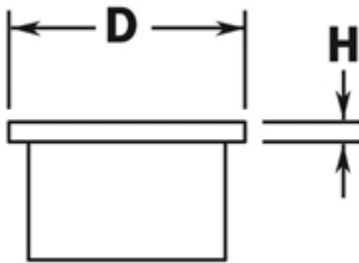
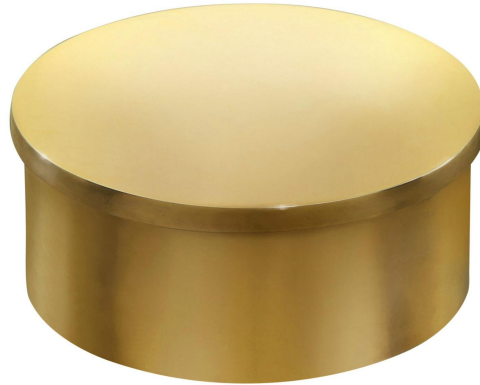


PART# 600/2

Flush End Cap for 2" Diameter Tubing



D	2"
H	1/8"

MATERIAL & AVAILABLE FINISHES			
	BRASS	304 SST	316 SST
Polished	√	√	
Satin	√	√	
Clear Coat	√		

MATERIAL USAGE			
	BRASS	304 SST	316 SST
Indoor	√	√	
Outdoor	√*		
*Uncoated brass only			

MATERIAL CARE	
Brass	Use Lavi Metal Polish (Item# 00202) and apply with a damp, soft cloth.
Stainless Steel	Use metal cleaner and apply with a damp, soft cloth.

INSTALLATION	Designed to mate with 2" OD x 0.05" wall tube. Adhere fitting to tube using Loctite 326 Metal Adhesive (#00201) and Primer (#00211).
HARDWARE INCLUDED	---
USE TOGETHER WITH	2" OD x 0.05" wall tube (A120).