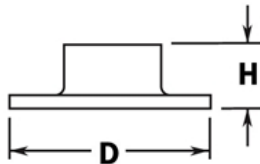


**PART# 500/1**

**2" Wall Flange for 1" Diameter Tubing**



<b>H</b>	13/16"
<b>D</b>	2-1/8"

**MATERIAL & AVAILABLE FINISHES**

	<b>BRASS</b>	<b>304 SST</b>	<b>316 SST</b>
<b>Polished</b>	√	√	
<b>Satin</b>	√	√	
<b>Clear Coat</b>	√		

**MATERIAL USAGE**

	<b>BRASS</b>	<b>304 SST</b>	<b>316 SST</b>
<b>Indoor</b>	√	√	
<b>Outdoor</b>	√*		

\*Uncoated brass only

**MATERIAL CARE**

<b>Brass</b>	Use Lavi Metal Polish (Item# 00202) and apply with a damp, soft cloth.
<b>Stainless Steel</b>	Use metal cleaner and apply with a damp, soft cloth.

**INSTALLATION**

Mount flange to surface using three #8 screws. Secure tube to flange using one #8 self drilling screw through the side hole.

**HARDWARE INCLUDED**

3 x #8 x 1" PFH screw. 1 x #8 x 5/8" self drilling screw.

**USE TOGETHER WITH**

1" OD tube (A100), matching flush fittings for 1" tube (730/1 series) and matching finials (600/1, 602/1, 00-604/1).