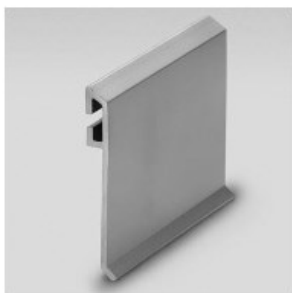


94102 4" 6063 T6 Beveled Toeplate Anodized Aluminum



Hollaender's unique beveled toeplate design allows for quick and easy installation. No drilling or welding; an extruded channel allows for secure attachment with no exposed fasteners. Uniform 1/8" wall thickness and beveled shape provides rigid non-buckling performance with the benefit of lightweight, easy handling.