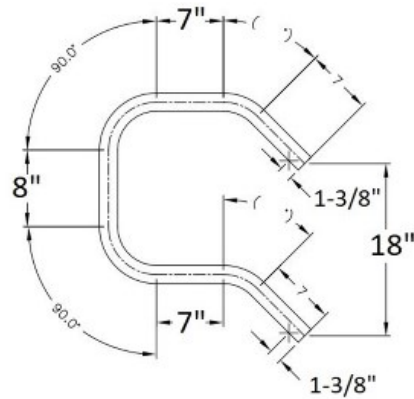


49101-Level End Loop 2-Rail Anodized Aluminum 6063 T6 - Pipe Size 1-1/2" IPS - Level



(2) item# 08655 (70ES) internal splices sold separately.

This is a pre-fabricated item with a lead time of 3-4 weeks.

- Upper: The upper loop is used on the top of a stair railings going down.
- Lower: The lower loop is uses at the bottom of the stair railings going up.