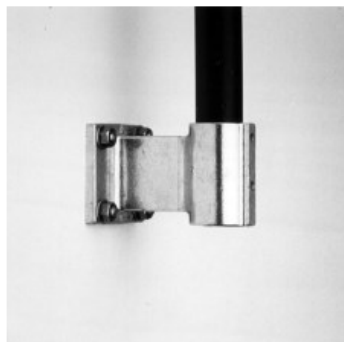
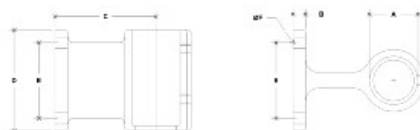


28340 4" Offset Wall Flange Aluminum Magnesium 1-1/2" IPS (1.94" ID)



NOTE: DIMENSIONS LOCATED IN RED IN THIS DRAWING
OFFRACE DIMENSIONS FOR THIS FITTING



#54-4 Offset Wall Flange (4")

SCALE: 1/4"=1"

ENGLISH UNITS (inches)							METRIC UNITS (mm)						
PIPE SIZE	A	B	C	D	E	F	PIPE SIZE	A	B	C	D	E	F
1 1/2"	2 1/2"	3 1/2"	4 1/2"	5 1/2"	6 1/2"	7 1/2"	1 1/2"	64	91	114	140	165	191

The 54-4 Offset Wall Flange is a side mount flange made of Aluminum-Magnesium 535 and it is available for 1-1/2" IPS pipe. It has a 4" offset from the wall to the center of the pipe, has two screws to hold the pipe in place and is available standard in mill finish with standard hardware.

Special order finishes available are

1. Mill Finish, Stainless Hardware
2. Anodized Finish, Standard Hardware
3. Anodized Finish, Stainless Hardware

This is NOT a pass-through fitting. Pipe cannot pass through the bottom of the bracket.

Mount the bracket to the wall / vertical surface by passing the appropriate hardware (not included) through the four mounting holes on the bracket.

Material Care: Clean with a non-abrasive metal cleaner. Apply with a soft, damp cloth.

Consult local building codes for rail height, wall offset and other requirements.

Call toll free at 877-810-4116 to speak with a product specialist.