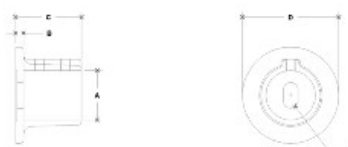


## 28100 Round Wall Flange Aluminum Magnesium 1-1/2" IPS (1.94" ID)



NOTE: DIMENSIONS LOCATED IN RED ARE FOR CUSTOMER  
SETBACK DIMENSIONS FOR GAO FITTING



#43 Round Wall Flange

GAO FITTING

DIMENSIONS (inches)							DIMENSIONS (mm)						
Pipe Size	A	B	C	D	E	F	Pipe Size	A	B	C	D	E	F
1/2"	1.52	2.27	2.13	2.13	1.58	1.58	1/2"	39	58	54	54	40	40
3/4"	1.52	2.27	2.13	2.13	1.58	1.58	3/4"	39	58	54	54	40	40
1"	1.52	2.27	2.13	2.13	1.58	1.58	1"	39	58	54	54	40	40
1 1/2"	1.52	2.27	2.13	2.13	1.58	1.58	1 1/2"	39	58	54	54	40	40

Item 28100 is made of aluminum-magnesium alloy 535 and includes two screws to hold the pipe in place. It is designed to hold 1-1/2" IPS pipe (see item A112ID).

- Wall Mount Only - Non-Structural
- This is NOT a pass-through fitting. Pipe cannot pass through the bottom of the flange.
- Quick and easy way to assemble structural pipe systems
- Reduce labor costs by 70%
- 100% reusable
- No welding or threading
- No drilling or bolting