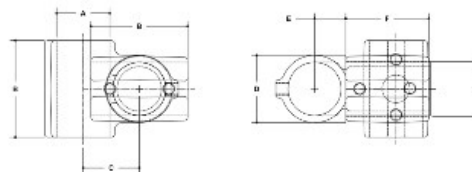


08500 Nu-Rail Adj. Cross Aluminum Magnesium 1-1/2" IPS (1.94" ID)



NOTE: DIMENSIONS LOCATED IN BOXES ARE COMMON
DIMENSIONS INDICATED FOR EACH FITTING



#30 Nu-Rail Adjustable Cross

SCALE: 1/4" = 1"

ENGLISH UNITS (INCHES)								METRIC UNITS (MM)							
PIPE SIZE	A	B	C	D	E	F	G	PIPE SIZE	A	B	C	D	E	F	G
2"	2.42	4.25	2.02	2.47	1.26	2.21	—	2"	61	108	51	62	32	56	—
1 1/2"	1.52	2.52	1.02	1.44	0.77	1.35	—	1 1/2"	39	64	26	37	20	34	—
1"	1.21	2.10	0.81	1.18	0.62	1.08	—	1"	31	53	21	30	16	27	—
3/4"	1.07	1.85	0.71	1.04	0.54	0.95	—	3/4"	27	47	18	27	14	24	—

- Quick and easy way to assemble structural pipe systems • Galvanized malleable iron
- Reduce labor costs by 70% • 100% reusable • No welding or threading • No drilling or bolting

Strong, malleable iron, slip-on pipe fittings with from one to five case-hardened set screws per fitting – depending on the number of pipes to be joined at one joint.

For slip-on aluminum fittings. These fittings can support an axial load of 2000 lbs per set screw with the set screw tightened to a torque of 29 lbs/ft. This is normally obtained when the screw is fully tightened using a ratchet wrench.

30-8 is adjustable between 30° and 45° from the horizontal.