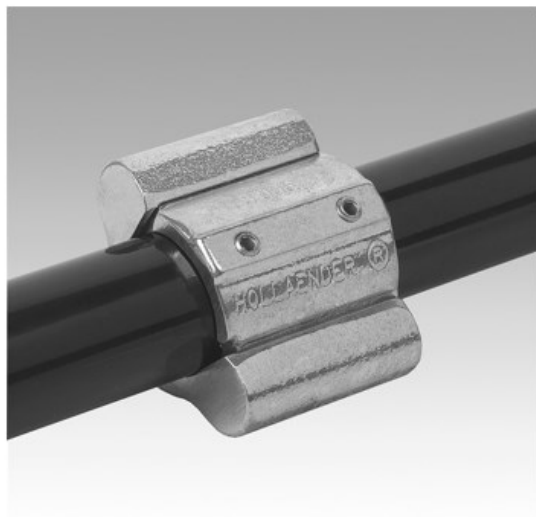
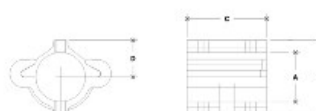


18170 Modular External Coupling Aluminum Magnesium 1-1/2" IPS (1.94" ID)



NOTE: DIMENSIONS LOCATED IN BOXES ARE COMMON
DIMENSIONS FOR EACH FITTING



#70S Modular External Coupling

TABLE 1 (continued)

ENGLISH UNITS (continued)										METRIC UNITS (continued)									
PIPE SIZE	A	B	C	D	E	F	G	H	I	PIPE SIZE	A	B	C	D	E	F	G	H	I
1/2"	1.31	1.19	0.85	0.40	0.40	0.40	0.40	0.40	0.40	13	33	30	22	10	10	10	10	10	10
3/4"	1.31	1.19	0.85	0.40	0.40	0.40	0.40	0.40	0.40	13	33	30	22	10	10	10	10	10	10
1"	1.31	1.19	0.85	0.40	0.40	0.40	0.40	0.40	0.40	13	33	30	22	10	10	10	10	10	10
1 1/2"	1.31	1.19	0.85	0.40	0.40	0.40	0.40	0.40	0.40	13	33	30	22	10	10	10	10	10	10

This coupling is made to fit over 1-1/2" IPS pipe and it is made of cast Aluminum-Magnesium Alloy 535.

*Thermal Conductivity (@77F, SI units): 0.24 cal/cm*s*K

*Heat Treatment - Achieves its physical and mechanical properties as-cast (F). This eliminates the time and cost of heat treating.

*Machinability - Excellent machinability as-cast, excellent surface finish and high dimensional stability.

*Corrosion Resistance - Highest of any cast alloy. It can be anodized for additional corrosion protection to a 0.7 mil thickness (215R1).

*Weldability - It can be welded by any of the inert gas processes, T.I.G. or M.I.G., using filler rod of 5356 or 5183.