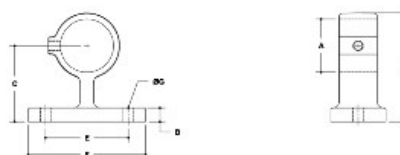


27360 Offset Support Bracket Aluminum Magnesium 1-1/4" IPS (1.72" ID)



NOTE: DIMENSIONS LOCATED IN BOXES ARE COMMON
BEHIND DIMENSIONS FOR EACH FITTING



#55 Offset Support Bracket

SCALE: 1/4" = 1"

ENGLISH UNITS (inches)							METRIC UNITS (mm)						
PIPE SIZE	A	B	C	D	E	F	PIPE SIZE	A	B	C	D	E	F
1/2"	1.33	0.50	2.75	1.64	1.30	4.03	1/2"	34	13	70	42	33	103
3/4"	1.65	0.52	2.56	1.14	1.50	4.03	3/4"	42	13	65	29	38	103
1"	1.83	0.58	2.33	1.03	1.50	4.03	1"	47	14	61	26	38	103

- Quick and easy way to assemble structural pipe systems • Galvanized malleable iron
- Reduce labor costs by 70% • 100% reusable • No welding or threading • No drilling or bolting

Strong, malleable iron, slip-on pipe fittings with from one to five case-hardened set screws per fitting – depending on the number of pipes to be joined at one joint.

For slip-on aluminum fittings. These fittings can support an axial load of 2000 lbs per set screw with the set screw tightened to a torque of 29 lbs/ft. This is normally obtained when the screw is fully tightened using a ratchet wrench.